

# MISSION CONSERVATION ACTIVITY GUIDE

March 2025 – Restore and Rewild

When we think of helping the environment, we often think of the words reduce, reuse, and recycle. All of these things are great for minimizing our environmental impact. Volunteering at a local conservation organization is another great way to help. However, did you know you can contribute to conservation in the comfort of your own home?

Today we will show you how you can contribute to helping the wilderness both inside and out!

## Indoor Activity: Zooniverse

### Materials:

- Laptop with internet connection.
- Headphones (optional but recommended)

### Procedure:

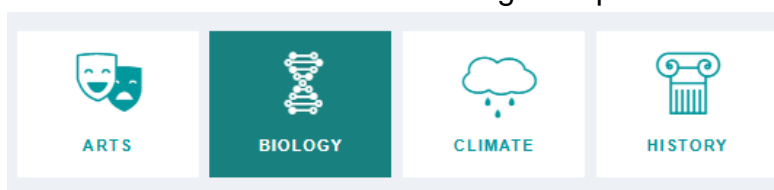
1. Open your preferred internet browser. Type in [www.zooniverse.org](http://www.zooniverse.org).

<https://www.zooniverse.org>

2. Click on the explore projects tab.



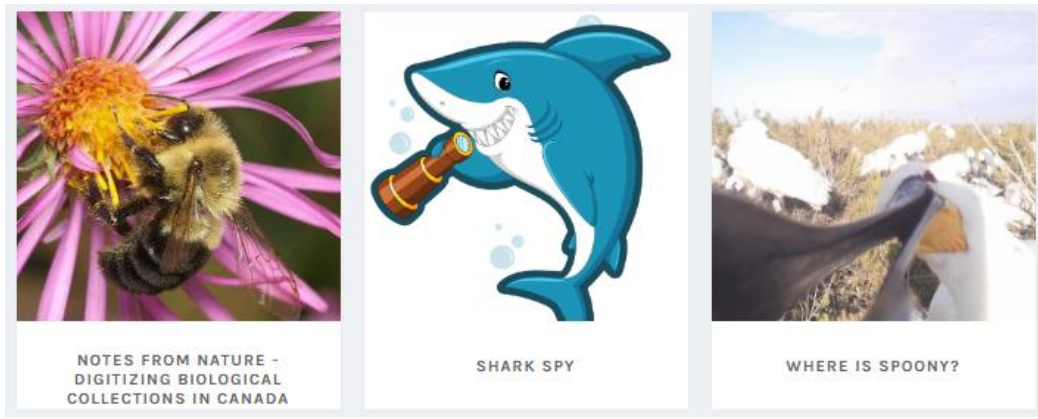
3. To help with animal research, click on the biology tab. Feel free to explore all the other tabs as well! The nature and climate tabs also have a lot of good options.



# MISSION CONSERVATION ACTIVITY GUIDE

March 2025 – Restore and Rewild

4. With the preferred tab selected, click on the project that interests you the most. For this example, I'm selecting Shark Spy.



5. Hit the get started button, then follow the instructions on the next page!

Help us identify and count sharks in the waters around New Zealand so that we can start filling in some of the missing data that which is important for the conservation of sharks, rays, and skates. Who knows what you might find?

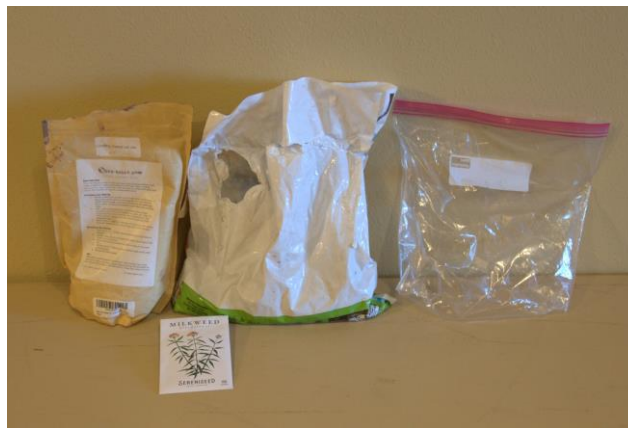
[Learn more](#) [Get started](#)

# MISSION CONSERVATION ACTIVITY GUIDE

March 2025 – Restore and Rewild

## Outdoor Activity: Seed Bomb

Seed bombs are a great way to grow native flowers and support your local ecosystem. The best place to get seeds for local native plants is through local nurseries. Plant and landscaping stores, as well as some online retailers, will sometimes carry native seeds as well.



### Materials:

- Native Seeds
- Pottery Clay (or red clay powder)
- Soil
- Plastic Bag (optional)
- Pan or parchment paper.

### Procedure:

1. Lay out ingredients. The best ratio to do is three parts clay, one part soil, and one parts seeds.
  - a. The ratio above is just a guideline and can vary depending on the clay used. Don't be afraid to experiment!
  - b. If you're not mixing outdoors, you may need to use a plastic bag during the clay mixing process like I did. Make sure you're reading the instructions that come with your clay.
2. Layer the mixture as follows from bottom to top: clay, soil, then seeds.

# MISSION CONSERVATION ACTIVITY GUIDE

March 2025 – Restore and Rewild



3. Mix everything together, either with your hands or by shaking the bag.
4. (Optional) If using red clay, mix in water little by little until you get a claylike consistency.
5. Roll into 0.5-1 in. balls.



6. Either throw in the wilderness or store somewhere dry until you're ready to use them.

We hope you enjoyed the activity guide this month! Don't forget to check out us at home mission for this month! To see a list of our other missions, or to learn more about Wonders of Wildlife, visit us at <https://wondersofwildlife.org/mission-conservation/>