

*Johnny Morris's*  
**WONDERS OF WILDLIFE**  
— NATIONAL —  
**MUSEUM & AQUARIUM**

# Coffee Filter Jellies

**Creature Crafting  
Activity Guide**

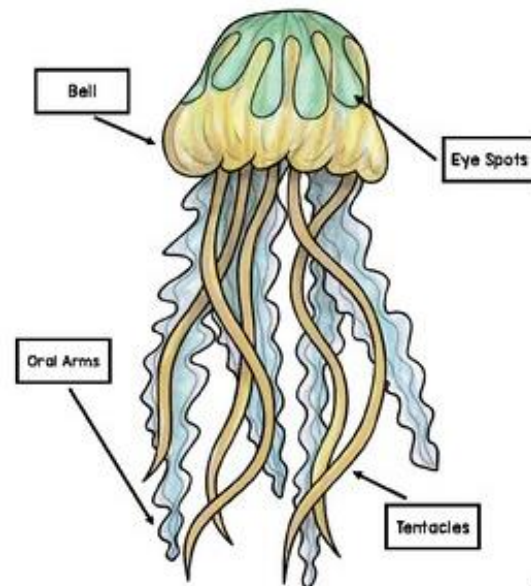


### Introduction:

There are over 2,000 different species of jellies around the world. Although they can come in different shapes and sizes, can be harmful or harmless, they all have a few things in common. All jellies have bells or medusa, arms and tentacles and stinging cells called nematocysts. In this craft, we will be focusing on their bell, arms, and tentacles. Let's get started!

### Supplies:

- o 3 coffee filters
- o Scotch tape
- o Scissors
- o Markers
- o 6-12" of string
- o Spray bottle filled with water



### How to:

1. Grab one of the three coffee filters and use 3 to 4 colors to draw all over one side, it is okay if there is still some white from the filter leftover.
2. Stack the first filter on top of the other 2 coffee filters.
3. Use your spray bottle to mist down the filters. The filters don't need to be super wet but make sure the colors spread to all three pieces.
4. Let them dry for roughly 15 minutes. When dry, all three filters should have color on them.
5. Take one of your filters and starting on the edge cut around the filter in a spiral, move inwards toward the middle and stop once you have cut to the center of the filter.
6. Repeat this spiral cut with the second coffee filter.
7. You should now have one whole filter, which is the bell of the jelly, and 2 spiral filters that are the arms and tentacles.
8. Take the one the arms, find the middle and tape it to the center of the uncut coffee filter.
9. Repeat with the second arm, taping over top of the other in a X pattern.
10. Make sure the arms are centered on the bell.
11. Give your jelly some shape by adjusting the bell and arms.
12. Tape your string to the top and hang your jelly anywhere you want!

**Partners in Conservation:** Here are some of our partners that can provide you more information about snakes!

- Association of Fish and Wildlife Agencies
- National Geographic Channel
- The Nature Conservancy
- National Park Service
- National Wildlife Federation
- US Fish and Wildlife Service
- Florida Fish and Wildlife Conservation Commission
- National Wildlife Federation
- Native American Fish and Wildlife Society
- Southwest Tribal Fisheries Commission